



People helping people; empowering individuals, strengthening families and enriching communities in Northeast Nebraska.



Housing

Weatherization: Helps alleviate the costs of heating and cooling homes. Improvements may include: insulation, caulking and weather stripping, repair or replacement of furnace/heating units.

Rent & Utility Assistance: Various programs provide rental & utility assistance to eligible clients, offering temporary assistance as they move toward self-sufficiency.



Food & Nutrition

CSFP (Commodity Supplemental Food Program): Nutritious supplemental foods for seniors age 60 and over provided on a bi-monthly basis.

WIC (Women, Infants & Children): Participants receive breastfeeding support, nutrition and health education tailored to their needs. eWIC benefit cards are issued to provide healthy food and infant formula to eligible mothers and children up to age 5.

Food Pantries: Locations in Creighton, Norfolk, South Sioux City and Pender; pantries provide food according to household size.



Health

Immunization Program: Provides 25 different vaccines to adults and children at 15 sites to serve adults and children both with and without insurance.

Healthy Families: Provides free one-on-one health and parenting education and referrals to families. Families may enroll prenatally or up to 3 months after birth.

Early Development Network (EDN): Serves children ages birth-3 in the Norfolk Public School district who may be experiencing developmental delays or serious health/medical issues.

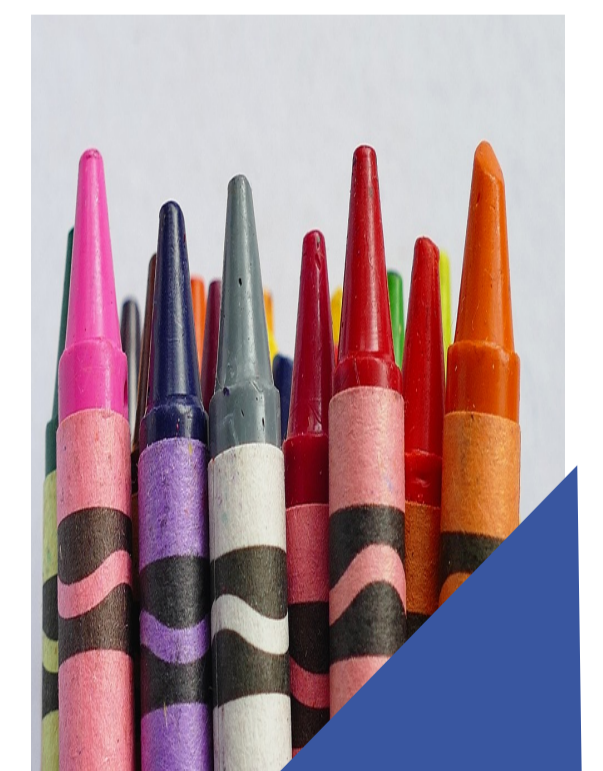


Veterans

SSVF (Supportive Services for Veteran Families): Provides supportive services such as: case management, rent/utility deposits, rent/utility assistance, emergency supplies, transportation, small car repairs, gas vouchers, moving costs and emergency housing to eligible veterans and their families.

Education

Head Start/Early Head Start: Provides quality early childhood education that promotes the school readiness of children from birth to five by enhancing their cognitive, social, and emotional development. These programs help build relationships with low-income families that support family well-being and self-sufficiency. Head Start is currently located in 9 counties in Northeast Nebraska. Early Head Start is located in Dakota County.



Supportive Services

Case Management: Collaborative assessment, planning, facilitation and care coordination for clients. Services provided may include budgeting, employment assistance, referrals, applying for additional services, etc.

Child Car Seats: Certified staff evaluates and insures the proper fit and installation of infant and child safety seats.

